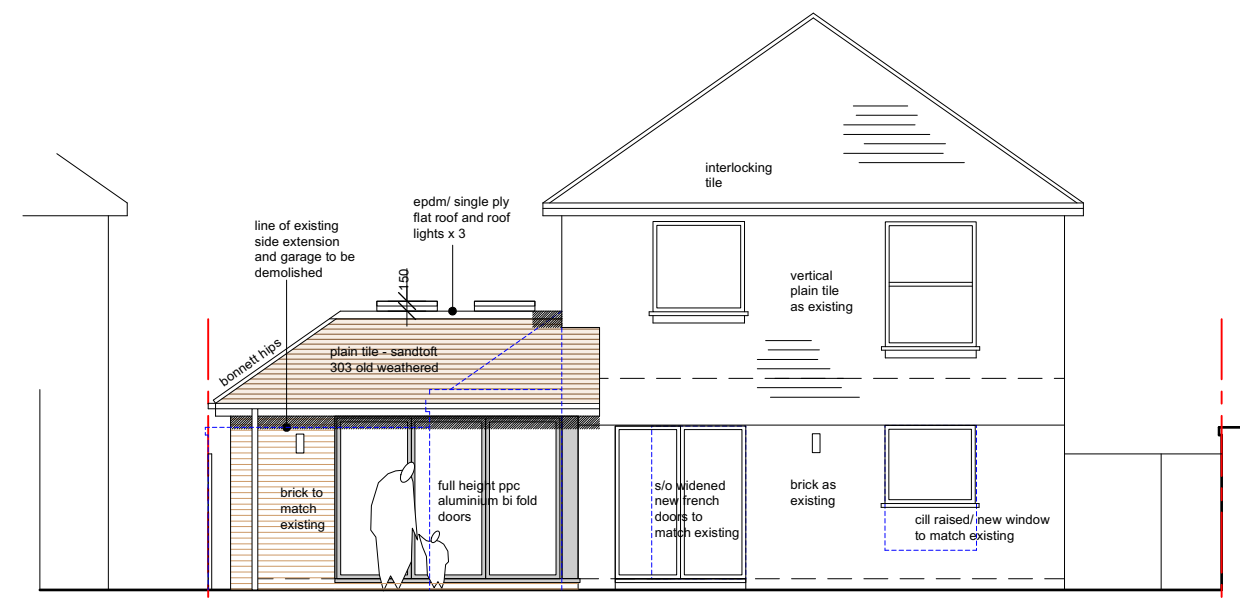
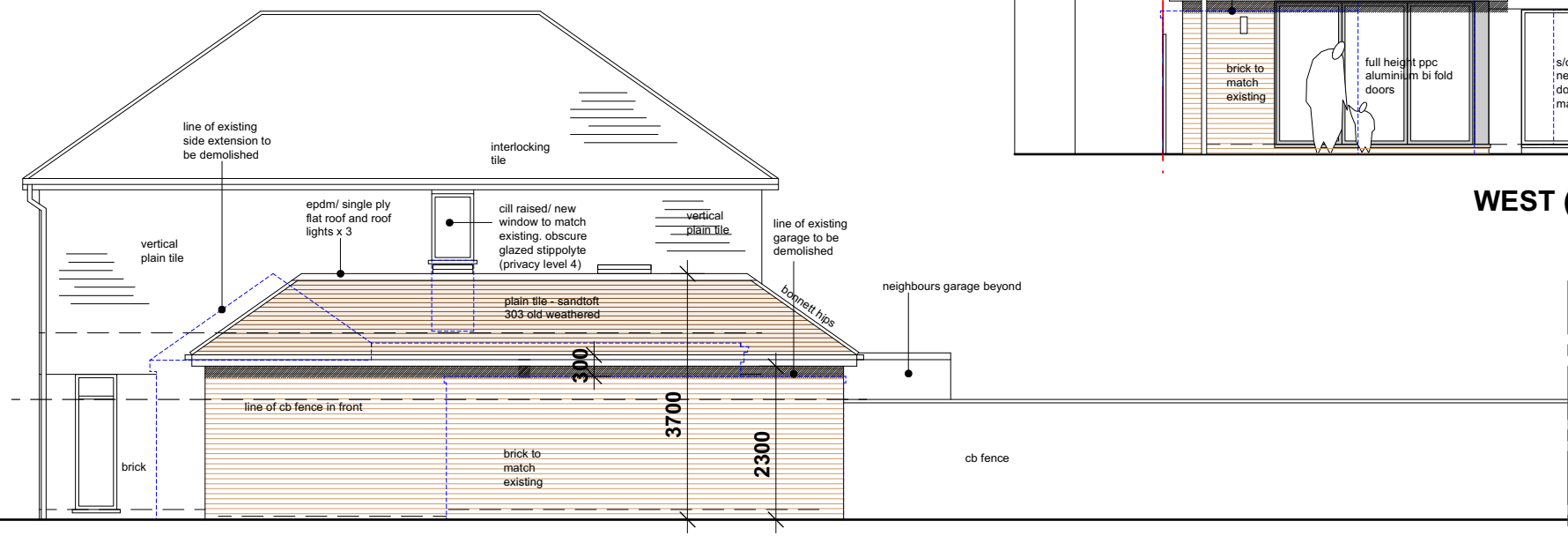


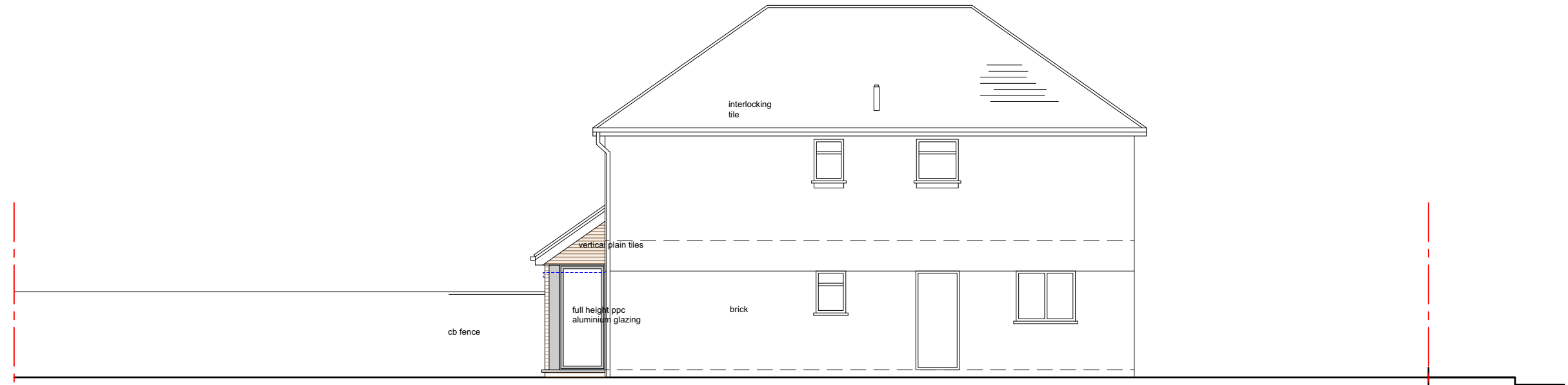
EAST (FRONT) ELEVATION



WEST (REAR) ELEVATION



NORTH (SIDE) ELEVATION



SOUTH (SIDE) ELEVATION

PLANNING

Project		11 THE PINES, SUNBURY, TW16 6HT		hitchcock architects ltd	
Drawing		PROPOSED ELEVATIONS		18 The Avenue Sunbury-on-Thames Middx TW16 5ES	
Drawing No.	Scale	Date			
11TPS- 08	1:100 @ A3	19.12.2022	m: 07855 522478 e: andrew@hitchcockarchitects.co.uk w: www.hitchcockarchitects.co.uk		

